

HD Camera
WIFI Network

Wireless Sensors
Movement Detection
Email Notification
App Push Notification
SMS & Phone Call Notification

GSM WIFI CAMERA ALARM SYSTEM

HD WIFI Camera with SMS & Phone Call Notification



User Manual
Ver 1.2

Table of Content

1. The Introduction.....	3
2. The Specification.	3
3. The Diagram.	4
4. The Settings of WIFI camera.....	5
4.1 The User Registration.	5
4.2 The Mobile APP Settings.	5
4.3 Add Wireless Sensors.	6
4.4 The PC CMS Settings.	8
5. The Settings of GSM Alarms.	9
6. The Warranty.....	12



Safe Startup

Do not use GSM unit when using GSM equipment is prohibited or might bring disturbance or danger.



Interference

All wireless equipment might interfere network signals of GSM unit and influence its performance.

1. The Introduction.

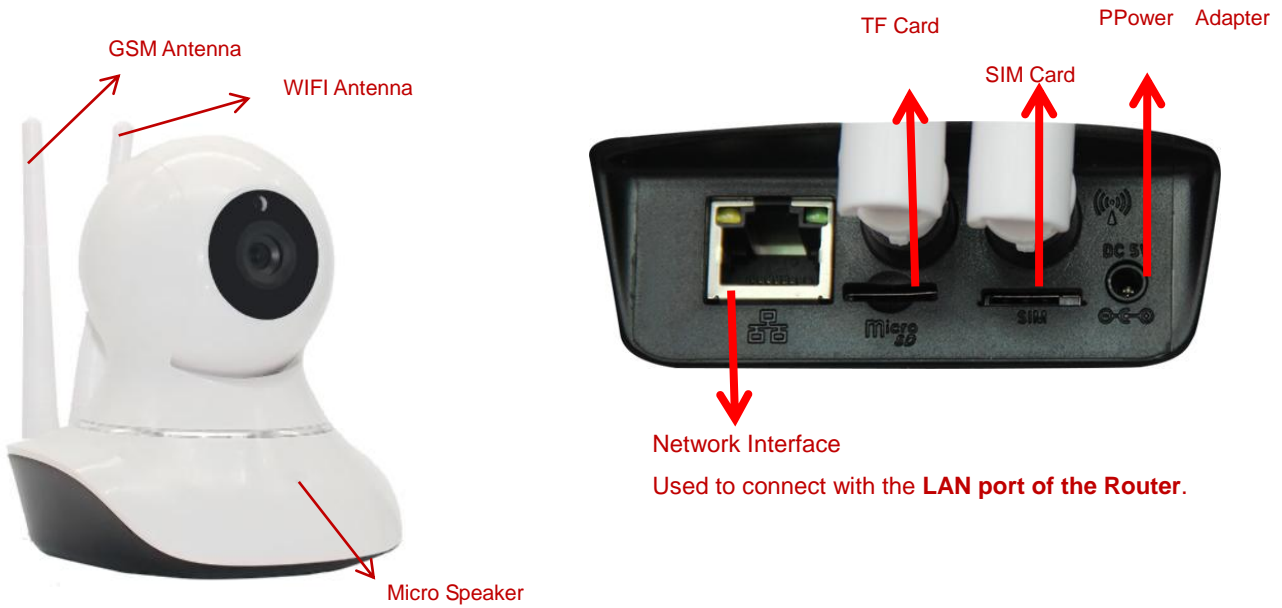
The GSM WIFI Camera is specially designed for home security. It could be used as a **HD WIFI Camera Alarm System** and a **GSM SMS Alarm System**.

The WIFI Camera had included most functions of the WIFI camera in the present market, and meanwhile its GSM alarm system can support 64 wireless zones, and support App push notification, SMS & Phone call notification, Email Notification.

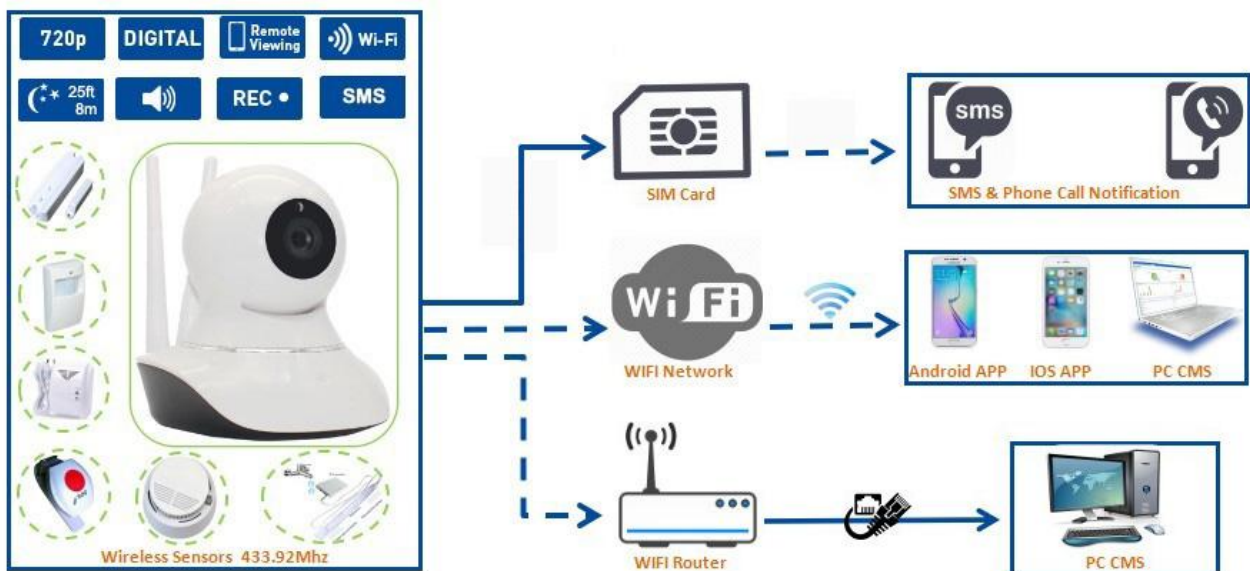
2. The Specification.

GSM Alarm	SIM Card Frequency	Quad-band: 850/900/1800/1900 Mhz 3G WCDMA : 900/2100MHz UMTS ; 3G: 850/1900MHz UMTS. 3G: 850/2100MHz UMTS.
	Wireless Zones (433.92Mhz)	64 wireless zones for wireless sensors. 8 zones for remote controls.
	Phone Numbers	9 , SMS notification or phone call notification.
WIFI Camera	Alarm Notification	Speaker Alarm, Alarm Recording, Screen shot, Email Alert, SMS Alert, Phone call Alert.
	Main Processor	Embedded Hi3518E
	Operating System	LINUX
	Image Sensor	1.3MP CMOS
	Image Coding Standard	H.264
	Video Standard	PAL
	Image Quality	720P: 1280*720
	Replay Image Quality	720P @ 25 fps
	Motion Detect	Yes
	LUX	0.1 LUX/F1.2
	Infrared	Yes
	2 way Voice Communication	Yes
	Screen Shot	Yes
	Coding Standard	G.711A
	Audio	45dB Microphone, Inbuilt 8Ω , 1W Speaker
	Functions	Manually Recording, Dynamically Motion Recording, Timing Recording, Alarm Recording
	Memory	Extra one TF card, Max. 32G
	Network	RJ45 Interface, 10/100 self-adaption
	WIFI	802.11 b/g/n
	Power Supply	DC 5V 2A
PTZ Control	Inbuilt horizontal and vertical control motor	
Consumption	1.5W	
Humidity & Temperature	10%-90% 0°C - + 55°C	
Size and Weight	103*110*112mm 300g	

3. The Diagram.



Network Interface	When using a network cable connected to the Internet use.
GSM antenna	GSM signal reception.
WIFI antenna	WIFI signal reception.
TF Card	Max. 32G
Power Adapter	DC 5V, 2A.



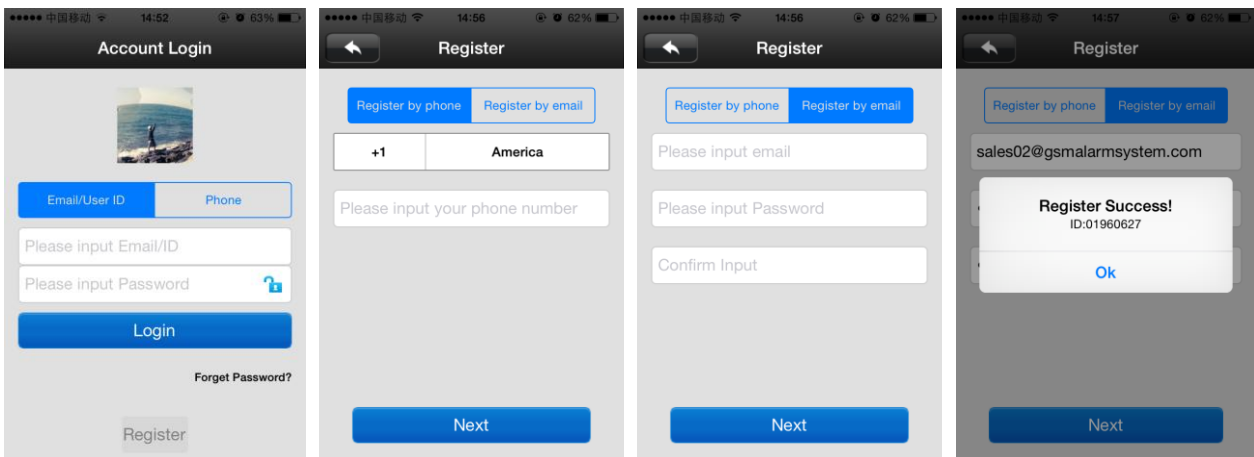
4. The Settings of WIFI camera.

Please scan the QR code to download the mobile app:
Or visit: <http://yoosee.co/>



4.1 The User Registration.

Use your mobile phone number or email to register a user ID according to your country code.



4.2 The Mobile APP Settings.

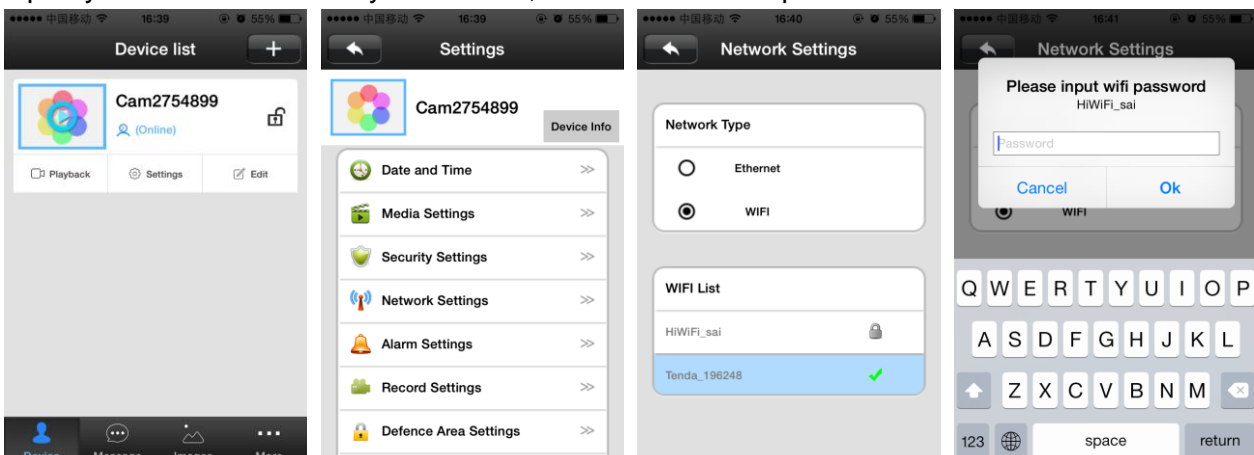
There are 2 different ways for camera connection.

4.2.1 Wired Connection via RJ45 port.

Use a network cable to connect the camera network interface to the router LAN interface (make sure the router is turned on DHCP function), the network indicator will be activated after connection successfully.

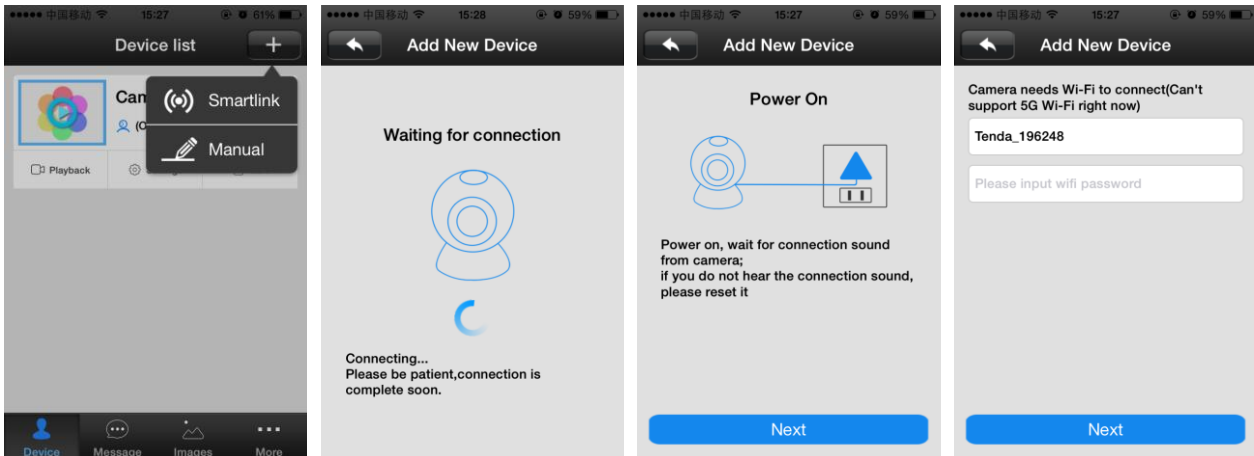
4.2.2 WIFI Connection via the Mobile APP.

Open your mobile APP with your user ID, then follow the step as below:



4.2.2.1 add the device by 'Smartlink'

Make sure your mobile and your camera are using the same WIFI network in your first programming. Please click 【Smartlink】 and follow the step as below, the app will add all the cameras automatically.



4.2.2.2 Add device manually:

Make sure the camera's power is on, and connect with the WIFI network already, then Click 【Manual】 , it will be like the picture as below:



Device Name: You can set it with what you want.
Device ID: It will show automatically.
Password: You need to set it by yourself in the first configuration.

4.3 Add Wireless Sensors.

Video settings

The max memory is 32G with the TF card, if need record video, please insert the memory card at first.

【Device】 → 【 Device name】 → 【 settings】 → 【 video settings】

Playback: 【Device】 → 【 Device name】 → 【Playback】

GSM 3G WIFI Camera Alarm System

Zone Settings.

Note: This function is optional, please make sure your device has this function.

The device supports 8 pcs remote controls, 64 wireless zones (433 frequency), supports 8 groups.

Learning the code as follows

Click **【Device】** → **【Device name】** → **【Settings】** → **【Defense Area settings】**

E.g. : Add door sensor in the hall, the serial number is 1.

1. Click **【hall】** → **【number 1】** → pop-up.
2. Click **【confirm】**, then trigger the door sensor, you will learn into the camera successfully. if match code successfully, the words will be turn blue from gray, and Pop-up: "learn successfully."
3. Back to device list interface, click the right lock key of the device **【🔒 Arming】**, wait for 15s, then trigger the sensor, the camera will get alarm.

【Remote control】,

This is for the remote control to arm/disarm the camera.

Alarm Settings.

Click **【Device】** → **【Device name】** → **【Settings】** → **【Alarm settings】**

add receiving alert APP ID in binding account, alarm write the receiving alarm email address.

Motion detection:

When the camera detect the movement in the video, it will send a notification in the APP.

Buzzer:

Open the Buzzer, when there is alert, the inbuilt buzzer will work until disarming.

Equipment Upgrade:

Click **【Device】** → **【Device name】** → **【Settings】** → **【Check for Device Update】**

4.4 The PC CMS Settings.

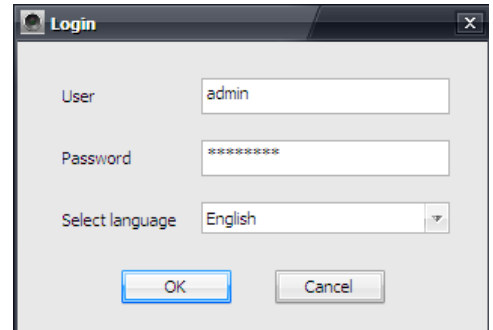
Please download the PC CMS software at <http://yoosee.co/>

Log Account in PC.

Two different ways to log in as below:

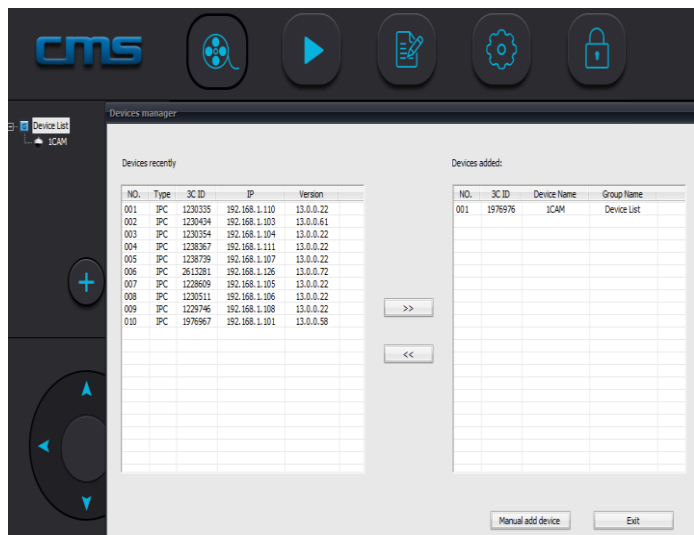
1. **【Remote Log In】** : Use the ID of your mobile app to log in.
2. **【log on locally】** : The account is:*admin*, password:*00000000*

When the PC software choose "log on locally".
the account is:*admin*,password: 00000000

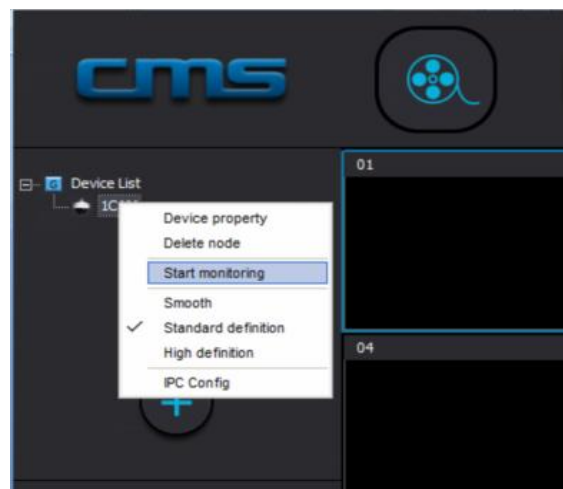


Add the device to PC.

On the left side of the "CMS" software interface, click the button **【+】**, fill the **【device name】** and **【device ID】** and **【password】**, then click **【OK】**

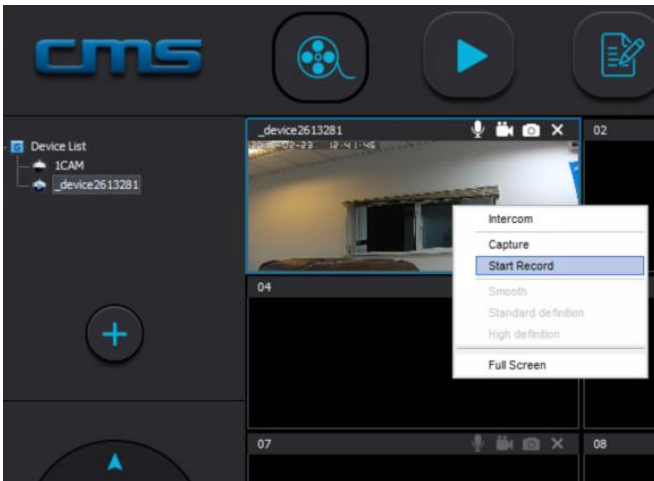


Device monitoring in PC. **【device name】** → **【start monitor】**




The video setting in PC.

Click on the monitor screen, select **【start video】** (Notice: the video will save the local on your PC)



Playback: this device can playback the video from computer, open the CMS software, choose

“playback” , user can find the playback files according to the data, the play it directly. (Note: the video in computer hard disk only can be played in PC, does not support playing in mobile)

Restore factory settings

Reset will delete all user settings: including WIFI information, access password, alarm information, arming zones information.

The steps: find the reset hole at the button of the device, and then use needle to insert it, press it more than three seconds after hearing “di” sound, when hearing the sound like” drawing the sword” reset successfully.

5. The Settings of GSM Alarms.

The SMS commands below are send to the SIM card of WIFI Camera for remote configuration.

Notice:

- 1) All the letters in SMS commands must be CAPITALIZED under the English format.
- 2) The Examples below are only for reference, please send the SMS commands according to your actual situations.
- 3) The default password (1234), please use the new password when the default password was changed.

1) Enable / Disable the GSM Alert.

SMS Commands	Return SMS Message
Password + SA X # For Example: 1234SA0#	Set OK!

Notice : X: 0 or 1

1234SA0#: Only when the WIFI network failed, the SMS or phone call notification will be activated.

1234SA1#: The SMS and Phone Call notification is always working. (The Factory Default)

GSM 3G WIFI Camera Alarm System

2) Set the phone number to receive the alert. (Max. 9 phone numbers)

SMS Commands	Return SMS Message								
Password + Serial Number + A + Function Code + # + Phone Number + # For Example: 12343A1#18676734714# Serial Number: 1 - 9 Function Code: 1 - 3 Phone number: Max. 21 digits	Tel1: Empty Tel2: Empty Tel3: 18676734714 - 1 Tel4: Empty Tel5: Empty Tel6: Empty Tel7: Empty Tel8: Empty Tel9: Empty								
<table border="1" style="margin: auto; border-collapse: collapse;"> <thead> <tr style="background-color: #cccccc;"> <th style="width: 15%;">Function Code</th> <th style="width: 85%;">Description</th> </tr> </thead> <tbody> <tr> <td style="text-align: center;">1</td> <td>SMS & Phone Call</td> </tr> <tr> <td style="text-align: center;">2</td> <td>Only SMS Notification</td> </tr> <tr> <td style="text-align: center;">3</td> <td>Only Phone Call</td> </tr> </tbody> </table>	Function Code	Description	1	SMS & Phone Call	2	Only SMS Notification	3	Only Phone Call	
Function Code	Description								
1	SMS & Phone Call								
2	Only SMS Notification								
3	Only Phone Call								

3) Check the list of the phone number .

SMS Commands	Return SMS Message
Password + A# For Example: 1234A#	Tel1: Empty Tel2: Empty Tel3: 18676734714 - 1 Tel4: Empty Tel5: Empty Tel6: Empty Tel7: Empty Tel8: Empty Tel9: Empty

4) Delete the phone number in the List.

SMS Commands	Return SMS Message
Password + Serial Number + A# For Example: 12343A# Serial Number: 1 - 9	Tel1: Empty Tel2: Empty Tel3: Empty. Tel4: Empty Tel5: Empty Tel6: Empty Tel7: Empty Tel8: Empty Tel9: Empty

5) Change the password (The default password is 1234, with 4 digits):

SMS Commands	Return SMS Message
Old Password + P + New Password For Examples: 1234P4321	【New Password】 ,This is the New Password, please remember it carefully.

Notice: When the password was forgot, please reset the camera.

6) Inquiry the device information remotely

SMS Commands	Return SMS Message
Password+ EE For Examples: 1234EE	Armed or Disarmed GSM Value: IMEI Code:

Notice: The GSM Signal Value range: 1~31.

7) Arm/Disarm the devices

SMS Commands	Return SMS Message
Password+ AA For Examples: 1234AA	Armed By "Telephone Number"
Password+ BB For Examples: 1234BB	Armed By "Telephone Number"

8) Send SMS notification to the First Phone Number when Arm/Disarm the devices

Action	SMS Commands	Return SMS Message
Enable this function	Password+ H ## For Examples: 1234H#	Set OK !
Disable this function	Password+ J ## For Examples: 1234J#	

Notice: : This function was disabled by the factory default.

9) Set the SMS notification content.

SMS Commands	Return SMS Message
Password+ B +Zone Number +## SMS Content + # For Example: 1234B01#The Living Room Alert#	Alarm! The living room Alert (position 1) Alarm! Window Alert (position 2) Alarm! the balcony Alert (position 3) Alarm! The bedrooms have Alert (position 4) Alarm! the Kitchen Alert (position 5) Alarm! the courtyard Alert (position 6) Alarm! The door is opened (position 7) Alarm! Other regional Alert(position 8)
Password+ B + Serial Number# For Example: 1234B3#	<i>The list of the exiting numbers</i>

Notice:

- 1) The SMS Content: Max. 40 letters..
- 2) The Zone number is: 01 - 64, please check more details in mobile app according to the chart below:

Zone Name in APP	Zone number in SMS
Hall	01 - 08
Window	09 - 16
Balcony	17 - 24
Bedroom	25 - 32

Zone Name in APP	Zone number in SMS
Kitchen	32 - 40
Courtyard	41 - 48
Door lock	49 - 56
Other	57 - 64

6. The Warranty.

- 1) This system is warranted to be free of defects in material and workmanship for one year.
- 2) This warranty does not extend to any defect, malfunction or failure caused by abuse or misuse by the Operating Instructions. In no event shall the manufacturer be liable for any alarm system altered by purchasers.

The End!